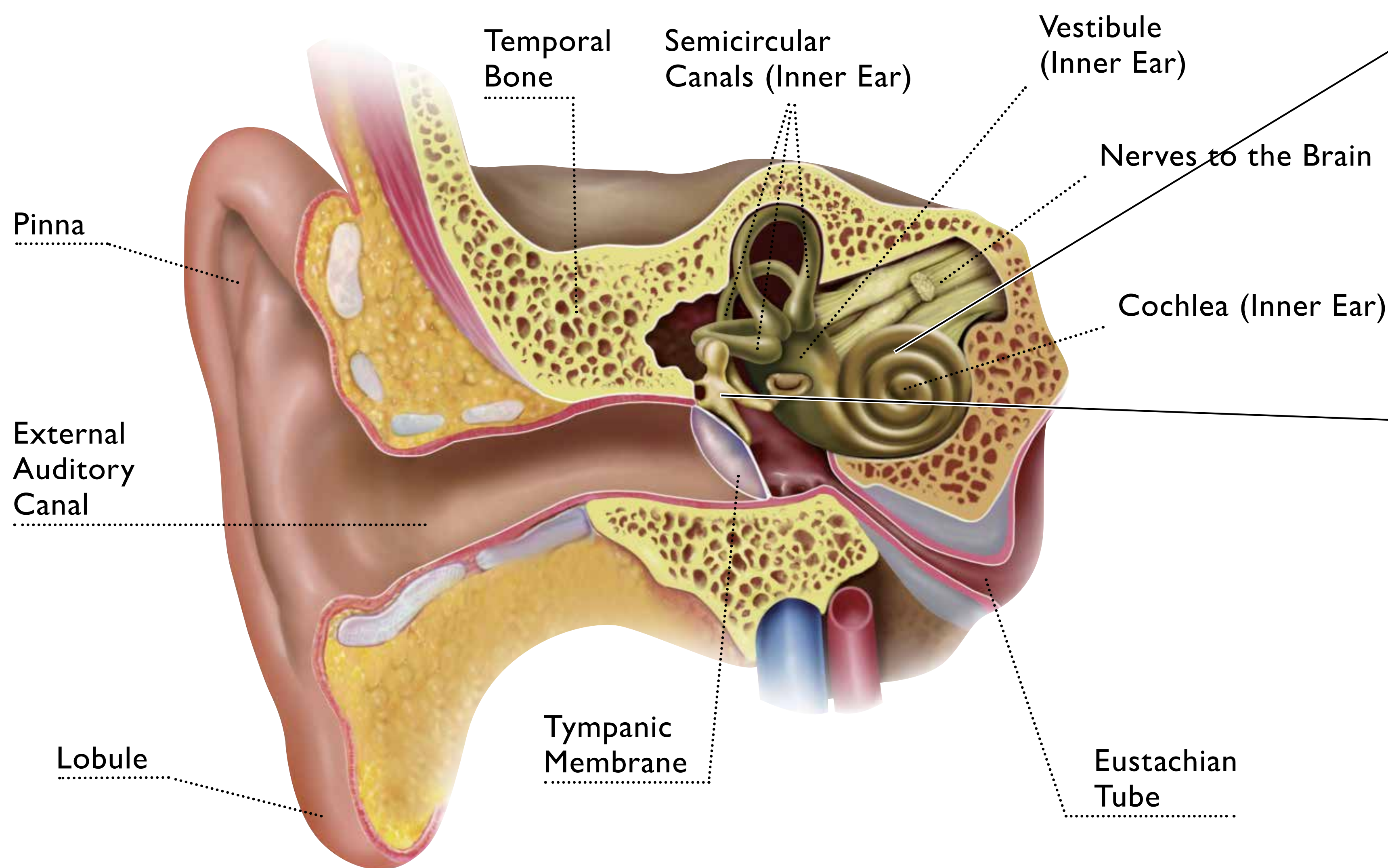
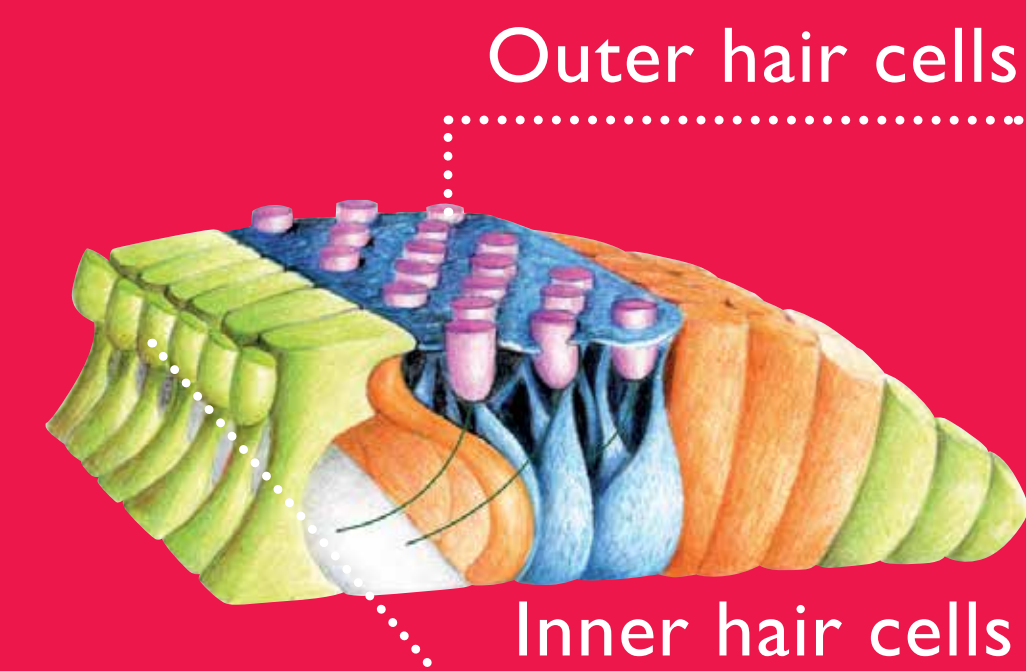


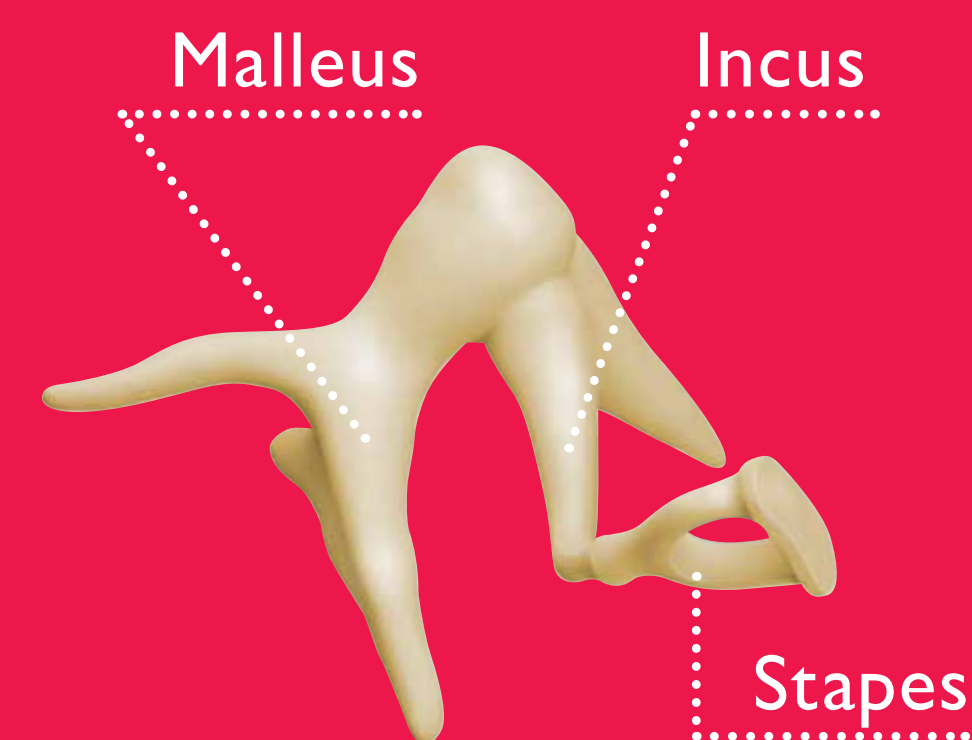
ANATOMY OF THE EAR



ORGAN OF CORTI



OSSICULAR CHAIN



Sensorineural hearing loss

This arises from problems with the inner ear and neural hearing loss. It is associated with how the brain can interpret sounds. In most cases, sensorineural hearing loss is permanent and usually affects both ears. This type of hearing loss is commonly treated through the fitting of hearing aids.

www.bernafon.ca

Conductive hearing loss

Caused by disorders of the outer and/or middle ear. Physical obstructions or abnormalities may block or inhibit the efficient entry of sound waves from reaching nerves located deep in the ear. The result is an overall lowering of volume and inability to hear faint sounds. These hearing losses are usually temporary and can sometimes be reduced or eliminated by medical intervention or surgery.

Mixed hearing loss

This is when there is a mixture of both conductive and sensorineural elements to the loss.

bernafon[®]
Your hearing • Our passion